

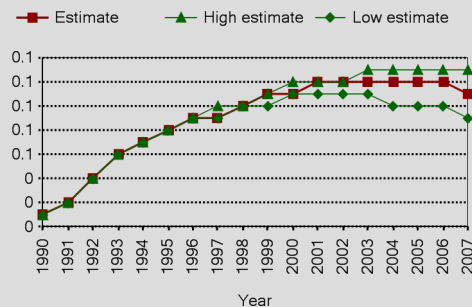
# ROMANIA

## Epidemiological Country Profile on HIV and AIDS



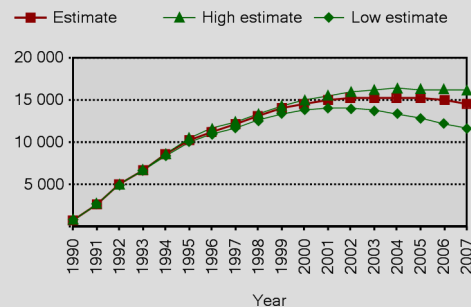
### Epidemic estimates

Estimated adult HIV (15-49) prevalence %



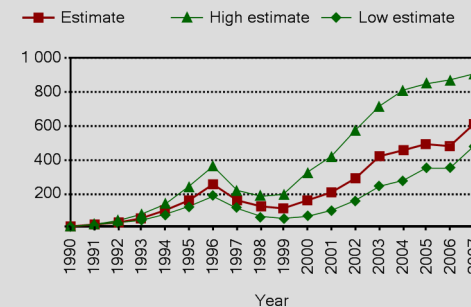
Source: UNAIDS/WHO, 2008

Number of people living with HIV



Source: UNAIDS/WHO, 2008

Annual number of AIDS deaths

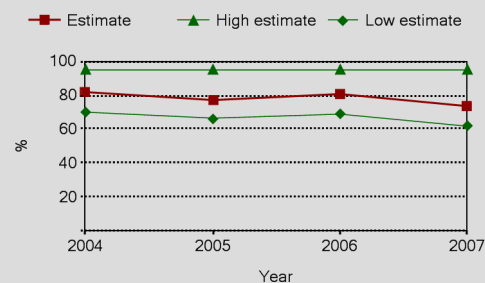


Source: UNAIDS/WHO, 2008

NO DATA AVAILABLE

### Coverage estimates (%)

Estimated antiretroviral therapy coverage (%)



Source: UNAIDS/WHO, 2008

Source: UNAIDS/UNICEF/WHO, 2008

Urban and rural adult (15-49) HIV prevalence (%)

Year	Urban	Rural

Source: See sources above in map.

### Trends in behaviours

Source:

Source: